

# ez writer

PORTABLE DVD/CD-RW DRIVE

## USER GUIDE



THE LEADER IN PERSONAL STORAGE

Copyright © Apricorn, Inc. 2004. All rights reserved.

Windows and MS-DOS are registered trademarks of Microsoft Corporation.

All other trademarks and copyrights referred to are the property of their respective owners.

Distribution of substantively modified versions of this document is prohibited without the explicit permission of the copyright holder.

Distribution of the work or derivative work in any standard (paper) book form for commercial purposes is prohibited unless prior permission is obtained from the copyright holder.

DOCUMENTATION IS PROVIDED AS IS AND ALL EXPRESS OR IMPLIED CONDITIONS, REPRESENTATIONS AND WARRANTIES, INCLUDING ANY IMPLIED WARRANTY OF MERCHANTABILITY, FITNESS FOR A PARTICULAR PURPOSE OR NON-INFRINGEMENT, ARE DISCLAIMED, EXCEPT TO THE EXTENT THAT SUCH DISCLAIMERS ARE HELD TO BE LEGALLY INVALID.

#### FCC Compliance Statements

This equipment has been tested and found to comply with the limits for a Class B digital device, pursuant to Part 15 of the FCC Rules. These limits are designed to provide reasonable protection against harmful interference in a residential installation. This equipment generates, uses and can radiate radio frequency energy and, if not installed and used in accordance with the instructions, may cause harmful interference to radio communications. However, there is no guarantee that interference will not occur in a particular installation. If this equipment does cause harmful interference to radio or television reception, which can be determined by turning the equipment off and on, the user is encouraged to try to correct the interference by one or more of the following measures:

Reorient or relocate the receiving antenna.

Increase the distance between the equipment and receiver.

Connect the equipment into an outlet on a circuit different from that to which the receiver is connected.

Consult the dealer or an experienced radio/TV technician for help.

#### CAUTION

CHANGE OR MODIFICATIONS NOT EXPRESSLY APPROVED BY PARTY RESPONSIBLE FOR COMPLIANCE COULD VOID THE USER AUTHORITY TO OPERATE THE EQUIPMENT.

# TABLE OF CONTENTS

Introduction .....	1
System Requirements .....	2
EZ Writer Kit .....	3
Part Names and Functions .....	4
Front Panel of the Drive .....	4
Rear Panel of the Drive .....	5
Hardware Installation .....	6
Software Installation for Windows 98SE .....	7
Software Installation for Windows Me .....	7
Software Installation for Windows 2000 .....	12
Software Installation for Windows XP .....	14
Using EZ Writer with USB Interface .....	16
Contacting Technical Support .....	18
RMA Policy .....	18
Warranty Conditions .....	19

# INTRODUCTION

EZ Writer has the following features:

- ◆ Attaches through the USB (Universal Serial Bus) interface, the specification of the interface must meet:  
  
USB 1.1 (Data Transfer Rate = up to 12MBits/sec) or  
  
USB 2.0 (Data Transfer Rate = up to 480Mbits/sec) standard
- ◆ This drive can read all types of CD and DVD media including CD, CD-R, CD-RW and DVD disk, DVD-R, DVD-RW, DVD+R, DVD+RW. As well as write to CD-R, CD-RW and DVD recordable media.\*
- ◆ When working with DVD playing software, this drive can playback DVD title smoothly (with USB 2.0 function).
- ◆ EZ Writer can be easily connected to computer via USB port, and can even be disconnected and re-connected while the computer is running (Plug-n-Play).

This user's manual is intended to describe how to install EZ Writer on the computer. To use the DVD playing software, please refer to the "On-Line Help" in the playing software.

\* Only with DVD burner optical drive, NOTE: Depending on the DVD burner included with you EZ Writer it may support either DVD-R and DVD-RW, or DVD+R and DVD+RW, or some DVD burners also support all 4 formats. The optical drive included with your EZ Writer will be clearly marked on the product packaging.

# SYSTEM REQUIREMENTS

<b>USB 2.0 function</b>	<b>USB 1.1 function</b>
◆ Notebook or desktop computer with USB 2.0 port.	◆ Notebook or desktop computer with USB 1.1 port.
◆ Windows 98SE/Me/2000 or Windows XP. (Make sure the USB 2.0 device driver has been installed and is available).	◆ Windows 98SE/Me/2000 or Windows XP. (Make sure the USB 2.0 device driver has been installed and is available).

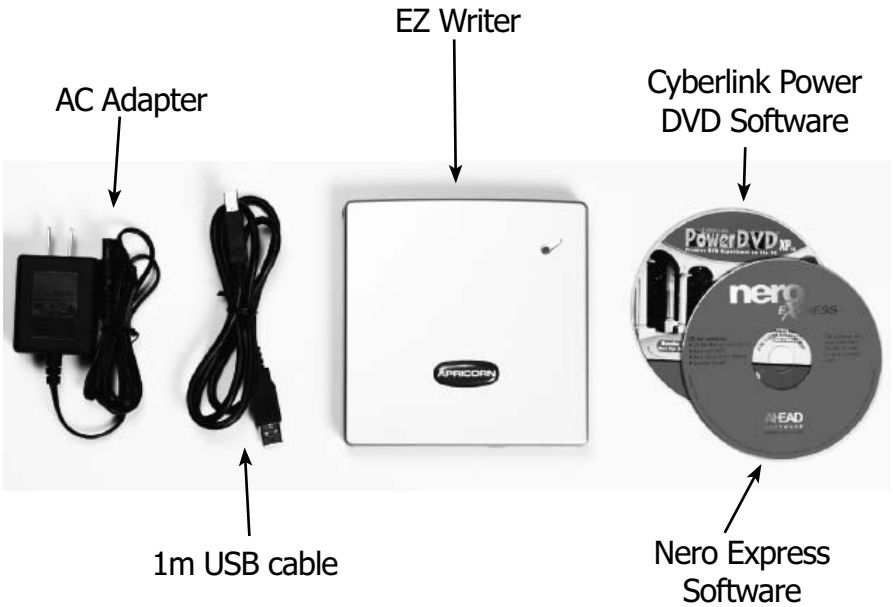
## NOTE:

- ◆ Although EZ Writer supports USB 2.0, the actual transfer speed is dependant on the speed of the USB port it is connected to. If the USB port supports USB 2.0, EZ Writer works at USB 2.0 speeds (up to 480Mbits/sec); if the USB port only supports USB 1.1, EZ Writer can only work at USB 1.1 speeds (up to 12Mbits/sec).
- ◆ When connecting the external drive to a USB 1.1 port, the Data Transfer Rate is too slow to guarantee smooth playback of the DVD video title. Apricorn only recommends connections to a USB 2.0 port to ensure smooth playback of DVD video titles.
- ◆ Under Windows 95 and Windows 98, USB devices are not stable to use, so Apricorn does not support its use with Windows 95 and Windows 98. Apricorn recommends using EZ Writer with Windows 98SE (Second Edition) or newer versions of Windows operating systems.

# EZ WRITER KIT

EZ Writer Kit includes the following items:

- EZ Writer Unit
- Nero Express Software
- Cyberlink Power DVD Software
- 1m USB cable
- AC Adapter
- User Guide



## PARTS NAMES AND FUNCTIONS

Your EZ Writer may differ slightly from the figure shown, however the controls will operate as described below.

### Front Panel of the Drive:

#### 1. Disc Ready/Read LED:

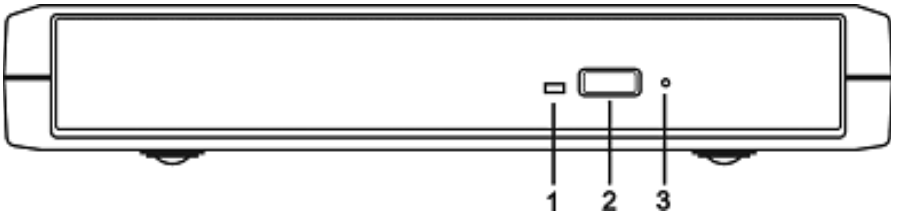
This LED is used to indicate the disc access status.

#### 2. Eject Button:

Press this button to open the disc tray. To close the disc tray, gently push the front of the tray.

#### 3. Emergency Eject:

In case you cannot supply power to the drive but want to remove a disk from the tray, push a small rod (paperclip) about 5cm long, through the Emergency Eject hole to disengage the gears inside. Then pull the tray out manually. After removing the disk, gently push the tray back to its original position. This procedure is only to be used in the case of an emergency and is not meant for normal operation.



NOTE: Front panel may look slightly different depending upon which optical drive is included with your EZ Writer.

## Rear Panel of the Drive

### 1. Interface Connector:

Connect the USB interface cable here.

### 2. Power Jack (DC IN):

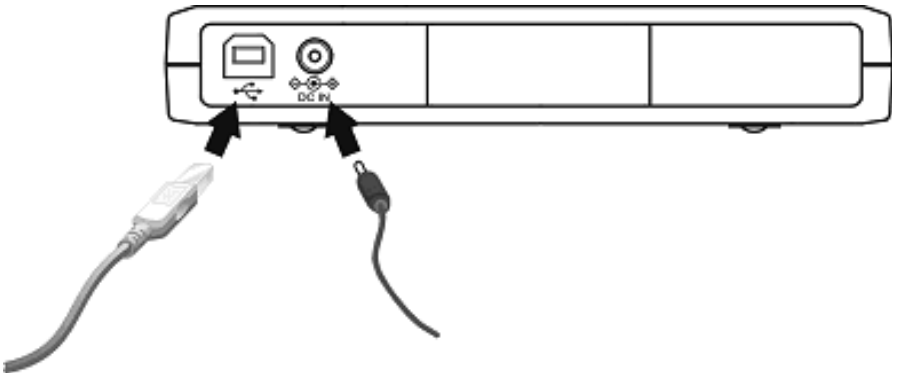
Connect the AC Adapter lead here.



## HARDWARE INSTALLATION

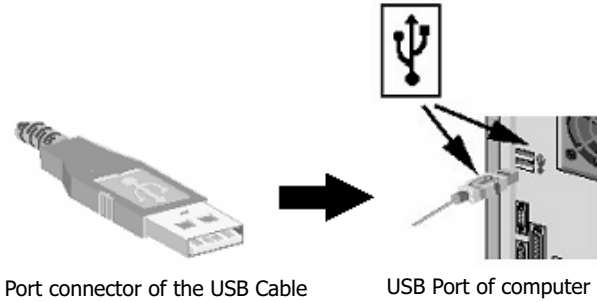
**Note: EZ Writer should only be powered by the AC Adapter provided by Apricorn, using an incorrect AC Adapter can result in permanent and unpredictable damage to the drive.**

1. Insert the plug of the USB cable into the Interface Connector of the drive. Press firmly until the Interface Connector is seated correctly.
2. Place the external drive in the horizontal position. The drive is designed to operate only in the horizontal position. Operating the external drive in any abnormal position is not recommended.
3. Connect the AC Adapter lead to the Power Jack (DC IN) at the rear panel of the drive.
4. Attach the AC Adapter to the AC power outlet.
5. You are now ready to install the EZ Writer device drivers, please follow the related software installation guide to install the EZ Writer device driver.



# SOFTWARE INSTALLATION FOR WINDOWS 98SE AND WINDOWS ME

1. Boot up your computer into Windows 98SE.
2. Ensure the USB interface cable and then the AC adapter connections are made as described in Hardware Installation. Insert the port connector of the USB interface cable into the USB port of your computer. The LED on the drive should light.



3. The 'Found New Hardware Wizard' will appear. On the first screen, click Next.



- On the following screen, select 'Search for the best driver for your device (Recommended)', and then click **Next**.



- Insert the EZ Writer Device Driver floppy diskette into your floppy drive. Check on 'Floppy disk drives', and then click **Next**.



6. Windows will search the floppy disk for the driver and will find the 'USB 2.0-ATA/ATAPI Bridge Controller'. Once it finds the proper driver click **Next**, and Windows will install the driver.



7. After Windows installs the Bridge Controller, click **Finish**.



8. Windows will then find more hardware, and a new 'Found New Hardware Wizard' will start. Click **Next**.



9. Windows will find the 'USB 2.0-ATA/ATAPI Mass Storage Controller'. Click **Next** to install the driver.



10. Click **Finish** to complete the driver installation for EZ Writer.

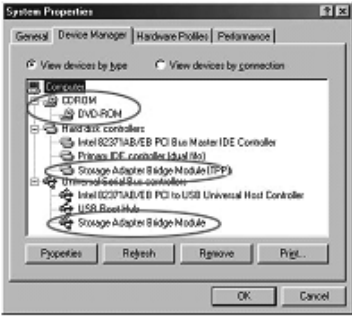


11. If EZ Writer does not appear in 'My Computer' or does not work properly, please go into 'Device Manager' to check whether the devices are installed as shown in the table and figure.

Installed Device Drivers	Location
USB 2.0-ATA/ATAPI Bridge Controller	Installed under 'Universal Serial Bus Controllers'.
USB 2.0-ATA/ATAPI Mass Storage	Installed under 'Hard Disk Controllers'.
EZ Writer drive brand name	Installed under 'CDROM' (the name listed in the figure may differ from your EZ Writer drive).



The above figure indicates that the drivers have been installed into a system that supports both USB 1.1 and USB 2.0.



The above figure indicates that the drivers have been installed into a system that supports both USB 1.1 and USB 2.0.

# SOFTWARE INSTALLATION FOR WINDOWS 2000

1. Boot up your computer into Windows 2000, making sure the USB device driver has been installed and is available. To check this, right-click 'My Computer', click 'Properties' then 'Hardware' and then 'Device Manager' window. Refer to the figures shown below to see if the USB Controller is correctly installed.

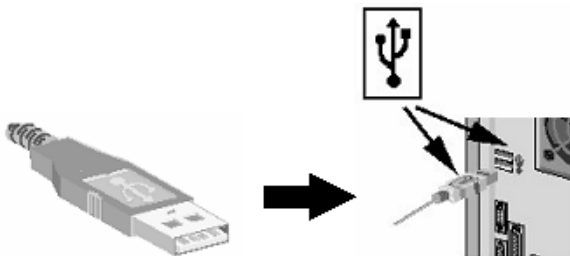


The above figure indicates that the drivers have been installed into a system that supports both USB 1.1 and USB 2.0.



The above figure indicates that the drivers have been installed into a system that supports both USB 1.1 and USB 2.0.

2. Connect the USB interface cable and the AC adapter as described in Hardware Installation. Insert the port connector of the USB interface cable into the USB port of your computer. The LED on the drive should light.



Port connector of the USB Cable

USB Port of computer

3. Windows 2000 will automatically install its resident device driver (USB Mass Storage Device). After the installation, EZ Writer will appear under a new drive letter in 'My Computer'.
4. If EZ Writer does not appear in 'My Computer' or does not work properly, go to 'Device Manager' to check whether the devices are installed as indicated below.

Installed Device Drivers	Location
USB Mass Storage Device	Installed under 'Universal Serial Bus Controllers'.
EZ Writer drive brand name	Installed under 'DVD/CD-ROM drives' (the drive listed in the figure may differ from your EZ Writer drive).



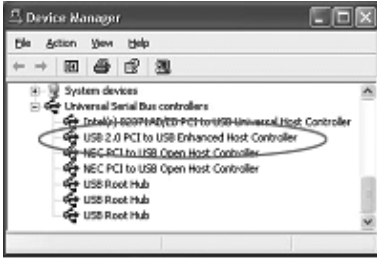
The above figure indicates that the drivers have been installed into a system that supports both USB 1.1 and USB 2.0.



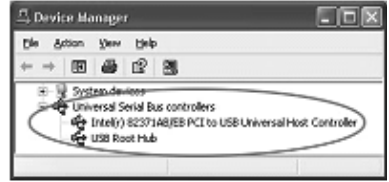
The above figure indicates that the drivers have been installed into a system that supports both USB 1.1 and USB 2.0.

# SOFTWARE INSTALLATION FOR WINDOWS XP

1. Boot up your computer into Windows XP, making sure the USB device driver has been installed and is available. To check this, right-click 'My Computer', click 'Properties' then 'Hardware' and then 'Device Manager' window. Refer to the figures shown below to see if the USB Controller is correctly installed.

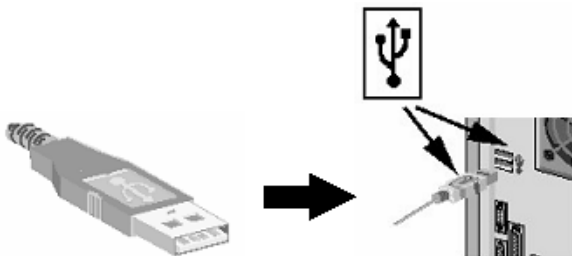


The above figure indicates that the drivers have been installed into a system that supports both USB 1.1 and USB 2.0.



The above figure indicates that the drivers have been installed into a system that supports both USB 1.1 and USB 2.0.

2. Connect the USB interface cable and the AC adapter as described in Hardware Installation. Insert the port connector of the USB interface cable into the USB port of your computer. The LED on the drive should light.

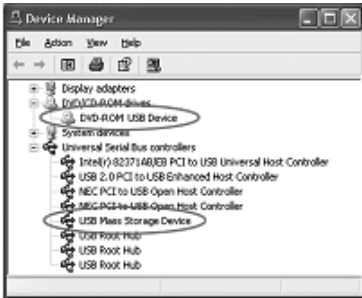


Port connector of the USB Cable

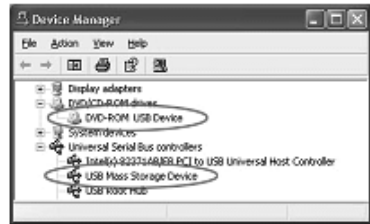
USB Port of computer

3. Windows 2000 will automatically install its resident device driver (USB Mass Storage Device). After the installation, EZ Writer will appear under a new drive letter in 'My Computer'.
4. If EZ Writer does not appear in 'My Computer' or does not work properly, go to 'Device Manager' to check whether the devices are installed as indicated below.

Installed Device Drivers	Location
USB Mass Storage Device	Installed under 'Universal Serial Bus Controllers'.
EZ Writer drive brand name	Installed under 'DVD/CD-ROM drives' (the drive listed in the figure may differ from your EZ Writer drive).



The above figure indicates that the drivers have been installed into a system that supports both USB 1.1 and USB 2.0.



The above figure indicates that the drivers have been installed into a system that supports both USB 1.1 and USB 2.0.

## **USING EZ WRITER WITH THE USB INTERFACE**

### **To connect EZ Writer to your computer**

#### **Windows 98SE/Me/2000/XP**

1. Insert the plug of the USB cable into the Interface Connector of your drive.
2. Connect the AC Adapter lead to the Power Jack (DC IN) at the rear panel of the drive. And then attach the AC adapter to the AC power outlet.
3. Insert the port connector of the USB cable into the USB port of your computer. The LED on the drive should light up and your EZ Writer drive is now ready for use.

### **To disconnect EZ Writer from your computer**

#### **Windows 98SE/Me**

1. Click on the icon in the system tray, a dialog box appears beside this icon.
2. Click 'Safely Remove EZ Writer = Drive(D:)' (The name may differ from yours, depending on which EZ Writer drive you are using) in the dialog box.
3. Wait for a few seconds until the system prompts 'EZ Writer storage device can now be safely removed from the system'. Click **OK**, and then remove the USB cable from the computer.

## **Windows 2000**

1. Double click on the icon in the system tray and the 'Unplug or Eject Hardware' dialog box appears.
2. Highlight 'USB Mass Storage Device' in the dialog box and click Stop, then click **OK**.
3. Wait a few seconds until the system prompts 'The USB Mass Storage Device can now be safely removed from the system'. Click **OK**, and then remove the USB cable from the computer.

## **Windows XP**

1. Click on the icon in the system tray, a dialog box appears beside this icon.
2. Click 'Safely Remove USB Mass Storage Device - Drive (D:)' (The drive letter may differ from yours) in the dialog box.
3. Wait for a few seconds until the system prompts 'The USB Mass Storage Device can now be safely removed from the system'. Click **OK**, and then remove the USB cable from the computer.

## CONTACTING TECHNICAL SUPPORT

Apricorn provides the following helpful resources for you:

1. Hardware Installation Section of the User's Guide.
2. Apricorn's Website (<http://www.apricorn.com>)  
This gives you the ability to check for up-to-date information.
3. Email us at [support@apricorn.com](mailto:support@apricorn.com).
4. Or call the Technical Support Department at 1-800-458-5448.

Apricorn's Technical Support Specialists are available from 8:00 a.m. to 5:00 p.m., Pacific Standard Time from Monday to Friday.

## RMA POLICY

An RMA (Return Merchandise Authorization) tracking number must be issued by Apricorn. If you need to return or replace your EZ Bus Mini, Apricorn requires that you perform the following steps:

1. Simply call Apricorn's technical support department with your EZ Bus Mini part number and a description of the problem(s) you are experiencing.
2. If the Apricorn representative finds cause for a return, they will issue an RMA number. Please write this number down.
3. Fill out an RMA authorization form with your package. The RMA form is available on-line at <http://www.apricorn.com/support/rma.php>.
4. Please send the prepaid package to the following address, make sure the RMA# is written on the exterior of the package:

**Apricorn**

**RMA#:** \_\_\_\_\_

**12191 Kirkham Road**

**Poway, CA 92064**

The purchaser shall be responsible for any loss or damage to the returned product until it is received by Apricorn. Purchaser should consider obtaining insurance with respect to shipping the product.

## **WARRANTY CONDITIONS**

### **Three-Year Warranty:**

Apricorn offers a 3-year warranty on all notebook-based products (i.e. EZ Bus, EZ Gig Notebook Hard Drive Upgrades, CardBus cards), and 12 months on all desktop-based products (i.e. VideoXB) against defects in materials and workmanship under normal use. The warranty period is effective from the date of purchase either directly from Apricorn or an authorized reseller.

### **Disclaimer and terms of the warranties:**

THE WARRANTY BECOMES EFFECTIVE ON THE DATE OF PURCHASE AND MUST BE VERIFIED WITH YOUR SALES RECEIPT OR INVOICE DISPLAYING THE DATE OF PRODUCT PURCHASE.

APRICORN WILL, AT NO ADDITIONAL CHARGE, REPAIR OR REPLACE DEFECTIVE PARTS WITH NEW PARTS OR SERVICEABLE USED PARTS THAT ARE EQUIVALENT TO NEW IN PERFORMANCE. ALL EXCHANGED PARTS AND PRODUCTS REPLACED UNDER THIS WARRANTY WILL BECOME THE PROPERTY OF APRICORN.

THIS WARRANTY DOES NOT EXTEND TO ANY PRODUCT NOT PURCHASED DIRECTLY FROM APRICORN OR TO ANY PRODUCT THAT HAS BEEN DAMAGED OR RENDERED DEFECTIVE: 1. AS A RESULT OF ACCIDENT, MISUSE, NEGLIGENCE, ABUSE OR FAILURE AND/OR INABILITY TO FOLLOW THE WRITTEN INSTRUCTIONS PROVIDED IN THIS INSTRUCTION GUIDE; 2. BY THE USE OF PARTS NOT MANUFACTURED OR SOLD BY APRICORN; 3. BY MODIFICATION OF THE PRODUCT; OR 4. AS A RESULT OF SERVICE, ALTERNATION OR REPAIR BY ANYONE OTHER THAN APRICORN AND SHALL BE VOID. THIS WARRANTY DOES NOT COVER NORMAL WEAR AND TEAR.

NO OTHER WARRANTY, EITHER EXPRESS OR IMPLIED, INCLUDING ANY WARRANTY OR MERCHANTABILITY AND FITNESS FOR A PARTICULAR PURPOSE, HAS BEEN OR WILL BE MADE BY OR ON BEHALF OF APRICORN OR BY OPERATION OF LAW WITH RESPECT TO THE PRODUCT OR ITS INSTALLATION, USE, OPERATION, REPLACEMENT OR REPAIR.

APRICORN SHALL NOT BE LIABLE BY VIRTUE OF THIS WARRANTY, OR OTHERWISE, FOR ANY INCIDENTAL, SPECIAL OR CONSEQUENTIAL DAMAGE INCLUDING ANY LOSS OF DATA RESULTING FROM THE USE OR OPERATION OF THE PRODUCT, WHETHER OR NOT APRICORN WAS APPRISED OF THE POSSIBILITY OF SUCH DAMAGES.

# NOTES



**APRICORN**

12191 KIRKHAM ROAD  
POWAY, CA, U.S.A. 92064  
1-858-513-2000